

# AFIS Operations

- \* AFIS Functional Assistance and Guidance to State Agencies, Commissions and Boards
- \* Collaborate with CGI on AFIS testing defect fixes, enhancements, improvements & upgrades
- \* Closing of the State Fiscal Year (prep begins in April and completes in September)

Kai Tu,  
AFIS Liaison/Vendor  
& 1099 Reporting  
Team



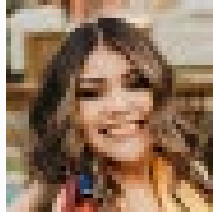
Jessica Blanchard, AFIS  
Liaison/Vendor & 1099  
Reporting Team



Mackenzie Watson, AFIS  
Liaison/AWR Team



Jessica Torres,  
AFIS Liaison/AWR  
Team

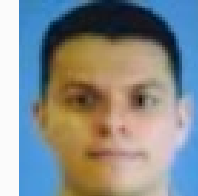


Arlene Rodriguez,  
AFIS Liaison/Vendor  
& 1099 Reporting  
Team

LaKeisha Lewis, Vendor  
& 1099 Reporting Team  
Supervisor



Patti Ferreira, AWR Team  
Supervisor



Sam Casarez,  
AFIS Liaison/AWR  
Team



Brian Nguyen,  
AFIS Operations  
Manager

## Vendor & 1099 Reporting Team

- \*Review/Approval of Vendor and Customer Creation and Modification Documents
- \*ACH Verification and Setup Process
- \*1099 Reporting and B-Notice Process
- \*IRS TIN/Name Matching
- \*AFIS & APP Troubleshooting with APP Staff
- \*AFIS & APP Inventory Troubleshooting with APP Staff
- \*Monitor [Vendors@azdoa.gov](mailto:Vendors@azdoa.gov) mailbox
- \*Monitor [Vendor.payautomation@azdoa.gov](mailto:Vendor.payautomation@azdoa.gov) mailbox

## AWR (Automatic Warrant Recon) Team

- \*Warrant/ACH Reconciliation
- \*ACH Returns and Reversals
- \*Warrant Stops/Cancel
- \*Warrant Copy Requests
- \*Forgeries and IRS Levies
- \*Expired Warrant Process
- \*jBilling Reconciliation Issues
- \*Community College Distributions
- \*US Bank P-Card/Travel Card Statewide Administration
- \*P-Card Functionality
- \*Encumbrance Liquidation Issues
- \*Fixed Asset Mass Depreciation
- \*Review of BSA 0582 NSF DADJ and IETBS documents
- \*Monitor [AFIS.Operations@azdoa.gov](mailto:AFIS.Operations@azdoa.gov) mailbox



# GENERAL ACCOUNTING OFFICE

**AFIS MANAGER- BRIAN NGUYEN**  
**(602) 989-3438 [BRIAN.NGUYEN@AZDOA.GOV](mailto:BRIAN.NGUYEN@AZDOA.GOV)**

## LIAISON LISTING

Liaison Name	Phone #	Email Address	Supervisor	Supervisor Email Address
JB = Jessica Blanchard	989-3185	<a href="mailto:Jessica.Blanchard@azdoa.gov">Jessica.Blanchard@azdoa.gov</a>	LaKeisha Lewis 989-4061	<a href="mailto:LaKeisha.Lewis@azdoa.gov">LaKeisha.Lewis@azdoa.gov</a>
SC = Sam Casarez	989-1912	<a href="mailto:Samuel.Casarez@azdoa.gov">Samuel.Casarez@azdoa.gov</a>	Patricia Ferreira 989-3517	<a href="mailto:Patricia.Ferreira@azdoa.gov">Patricia.Ferreira@azdoa.gov</a>
MW = Mackenzie Watson	989-9304	<a href="mailto:Mackenzie.Watson@azdoa.gov">Mackenzie.Watson@azdoa.gov</a>	Patricia Ferreira 989-3517	<a href="mailto:Patricia.Ferreira@azdoa.gov">Patricia.Ferreira@azdoa.gov</a>
AR = Arlene Rodriguez	989-2472	<a href="mailto:Arlene.Rodriguez@azdoa.gov">Arlene.Rodriguez@azdoa.gov</a>	LaKeisha Lewis 989-4061	<a href="mailto:LaKeisha.Lewis@azdoa.gov">LaKeisha.Lewis@azdoa.gov</a>
KT = Kai Tu	989-3210	<a href="mailto:Kai.Tu@azdoa.gov">Kai.Tu@azdoa.gov</a>	LaKeisha Lewis 989-4061	<a href="mailto:LaKeisha.Lewis@azdoa.gov">LaKeisha.Lewis@azdoa.gov</a>
JT = Jessica Torres	989-6952	<a href="mailto:Jessica.Torres@azdoa.gov">Jessica.Torres@azdoa.gov</a>	Patricia Ferreira 989-3517	<a href="mailto:Patricia.Ferreira@azdoa.gov">Patricia.Ferreira@azdoa.gov</a>
CSB = Central Services Bureau	542-5624	<a href="mailto:CSB@azdoa.gov">CSB@azdoa.gov</a>	Marissa Moreno 542-5624	<a href="mailto:Marissa.Moreno@azdoa.gov">Marissa.Moreno@azdoa.gov</a>

AGY	AGY DESCRIPTION	LIAISON
AAA	GENERAL ACCOUNTING OFFICE	SC
ABA	ACCOUNTANCY BOARD (CSB)	CSB
ADA	DEPARTMENT OF ADMINISTRATION	SC
AFA	OFFICE OF EQUAL OPPORTUNITY (part of GVA)	AR
AGA	ATTORNEY GENERAL	JT
AHA	DEPARTMENT OF AGRICULTURE	KT
AMA	COMMISSION OF AFRICAN-AMERICAN AFFAIRS (CSB)	CSB
ANA	ACUPUNCTURE BOARD OF EXAMINERS (CSB)	CSB
ASA	ARIZONA STATE UNIVERSITY	SC
AUA	AUDITOR GENERAL	SC
BAA	BOARD OF ATHLETIC TRAINING (CSB)	CSB
BFA	BOARD OF FINGERPRINTING (CSB)	CSB
BHA	BOARD OF BEHAVIORAL HEALTH EXAMINERS (CSB)	CSB
BNA	BOARD OF NURSING	JT
BRA	BOARD OF REGENTS	KT
CAA	COMMERCE AUTHORITY	SC
CBA	ARIZONA BARBERING AND COSMETOLOGY BOARD	SC
CCA	CORPORATION COMMISSION	SC
CDA	EARLY CHILDHOOD DEVELOPMENT AND HEALTH BOARD	SC
CEA	BOARD OF CHIROPRACTIC EXAMINERS (CSB)	CSB
CHA	DEPT OF CHILD SAFETY	AR
CLA	EXPOSITION AND STATE FAIR BOARD (COLISEUM) (CSB-Backup Only)	JB
CMA	COMMUNITY COLLEGE BOARD	SC
CNA	CONSTABLE ETHICS STANDARDS AND TRAINING BOARD (CSB)	CSB
COA	COURT OF APPEALS	AR
CRA	COTTON RESEARCH COUNCIL	KT
CSA	BOARD FOR CHARTER SCHOOLS (CSB)	CSB

<b>AGY</b>	<b>AGY DESCRIPTION</b>	<b>LIAISON</b>
CTA	COURT OF APPEALS DIV II	AR
DCA	DEPARTMENT OF CORRECTIONS	JB
DEA	DEPARTMENT OF ECONOMIC SECURITY	JB
DFA	COMMISSION FOR DEAF & HARD OF HEARING	AR
DJA	AZ DEPARTMENT OF JUVENILE CORRECTIONS	KT
DOA	DISPENSING OPTICIANS BOARD (CSB)	CSB
DTA	DEPARTMENT OF TRANSPORTATION	SC
DXA	BOARD OF DENTAL EXAMINERS (CSB)	CSB
EBA	BOARD OF EDUCATION (CSB)	CSB
ECA	CITIZEN CLEAN ELECTION COMMISSION	KT
EDA	DEPARTMENT OF EDUCATION	KT
EOA	OFFICE OF ECONOMIC OPPORTUNITY	AR
EQA	BOARD OF EQUALIZATION (CSB)	CSB
EVA	DEPARTMENT OF ENVIRONMENTAL QUALITY	JT
FAA	ARIZONA FINANCE AUTHORITY	AR
FDA	BOARD OF FUNERAL DIRECTORS & EMBALMERS (CSB)	CSB
FOA	ARIZONA STATE FORESTRY DIVISION	AR
FXA	COMPANION ANIMAL SPAY/NEUTER COMMITTEE	CSB
GFA	GAME AND FISH DEPARTMENT	KT
GHA	GOVERNOR'S OFFICE OF HIGHWAY SAFETY (CSB-Backup Only)	AR
GMA	DEPARTMENT OF GAMING	KT
GVA	GOVERNOR'S OFFICE	AR
HCA	AHCCCS	AR
HDA	DEPARTMENT OF HOUSING	JT
HEA	BOARD OF HOMEOPATHIC MEDICAL EXAMINERS (CSB)	CSB
HGA	OFFICE OF ADMINISTRATIVE HEARING	SC
HIA	ARIZONA HISTORICAL SOCIETY	SC
HLA	DEPARTMENT OF HOMELAND SECURITY (part of GVA)	AR
HOA	HOUSE OF REPRESENTATIVES	AR
HSA	DEPARTMENT OF HEALTH SERVICES	JT
HUA	COMMISSION ON THE ARTS (CSB)	CSB
IAA	GOVERNOR'S OFFICE ON TRIBAL RELATIONS (part of GVA)	AR
ICA	INDUSTRIAL COMMISSION	AR
IDA	DEPARTMENT OF INSURANCE AND FINANCIAL INSTITUTIONS	SC
JCA	CRIMINAL JUSTICE COMMISSION	AR
JLA	JOINT LEGISLATIVE BUDGET COMMITTEE	JB
LCA	LEGISLATIVE COUNCIL	JB
LDA	LAND DEPARTMENT	JB
LLA	DEPT OF LIQUOR LICENSES AND CONTROL	SC
LOA	LOTTERY COMMISSION	JT
MAA	DEPT OF EMERGENCY MANAGEMENT & MILITARY AFFAIRS	JB
MEA	MEDICAL BOARD (CSB-Backup Only)	CSB
MIA	MINE INSPECTOR (CSB)	CSB
MSA	BOARD OF MEDICAL STUDENT LOANS (under HSA)	JB
MTA	BOARD OF MASSAGE THERAPY (CSB)	CSB
NAA	NORTHERN ARIZONA UNIVERSITY	SC
NBA	NATUROPATHIC PHYSICIANS MEDICAL BOARD (CSB)	CSB
NCA	BOARD OF EXAM NURSING CARE (CSB)	CSB

<b>AGY</b>	<b>AGY DESCRIPTION</b>	<b>LIAISON</b>
NSA	NAVIGABLE STREAMS ADJUDICATION COMMISSIONS (CSB)	CSB
OBA	BOARD OF OPTOMETRY (CSB)	CSB
OCA	OMBUDSMAN CITIZENS AIDE OFFICE	JB
OSA	BOARD OF OSTEOPATHIC EXAMINERS (CSB)	CSB
OTA	BOARD OF OCCUPATIONAL THERAPY EXAMINERS (CSB)	CSB
PBA	PERSONNEL BOARD (CSB)	CSB
PCA	AZ PARENTS COMMISSION DRUG ED AND PREVEN (with GVA)	AR
PEA	COMMISSION FOR POSTSECONDARY ED (CSB)	CSB
PHA	PRESCOTT HISTORICAL SOCIETY (CSB)	CSB
PIA	PIONEER'S HOME	JT
PMA	BOARD OF PHARMACY (CSB)	CSB
POA	BOARD OF PODIATRY EXAMINERS (CSB)	CSB
PPA	BOARD OF EXECUTIVE CLEMENCY (CSB)	CSB
PRA	PARKS BOARD	JT
PSA	DEPARTMENT OF PUBLIC SAFETY	JB
PTA	BOARD OF PHYSICAL THERAPY (CSB)	CSB
PVA	BOARD FOR PRIVATE POST-SECONDARY EDUCATION (CSB)	CSB
RBA	BOARD OF RESPIRATORY CARE EXAMINERS (CSB)	CSB
RDA	INDEPENDENT REDISTRICTING COMMISSION (CSB)	CSB
REA	REAL ESTATE DEPARTMENT (CSB)	CSB
RGA	REGISTRAR OF CONTRACTORS	JB
RSA	PUBLIC SAFETY PERSONNEL RETIREMENT SYSTEM	JB
RTA	RETIREMENT SYSTEM	KT
RVA	DEPARTMENT OF REVENUE	SC
SDA	SCHOOL FOR THE DEAF & BLIND	SC
SFA	SCHOOL FACILITIES BOARD	SC
SNA	SENATE	AR
SPA	SUPREME COURT	AR
STA	SECRETARY OF STATE	KT
SYA	BOARD OF PSYCHOLOGIST EXAMINERS (CSB)	CSB
TEA	BOARD OF TECHNICAL REGISTRATION (CSB)	CSB
TOA	OFFICE OF TOURISM	KT
TRA	STATE TREASURER	SC
TXA	BOARD OF TAX APPEALS (CSB)	CSB
UAA	UNIVERSITY OF ARIZONA	SC
UOA	RESIDENTIAL UTILITIES CONSUMER'S OFFICE (CSB)	CSB
VSA	DEPT OF VETERAN'S SERVICE	JT
VTA	VETERINARY MEDICAL EXAMINERS BOARD (CSB)	CSB
WCA	DEPT OF WATER RESOURCES	JT